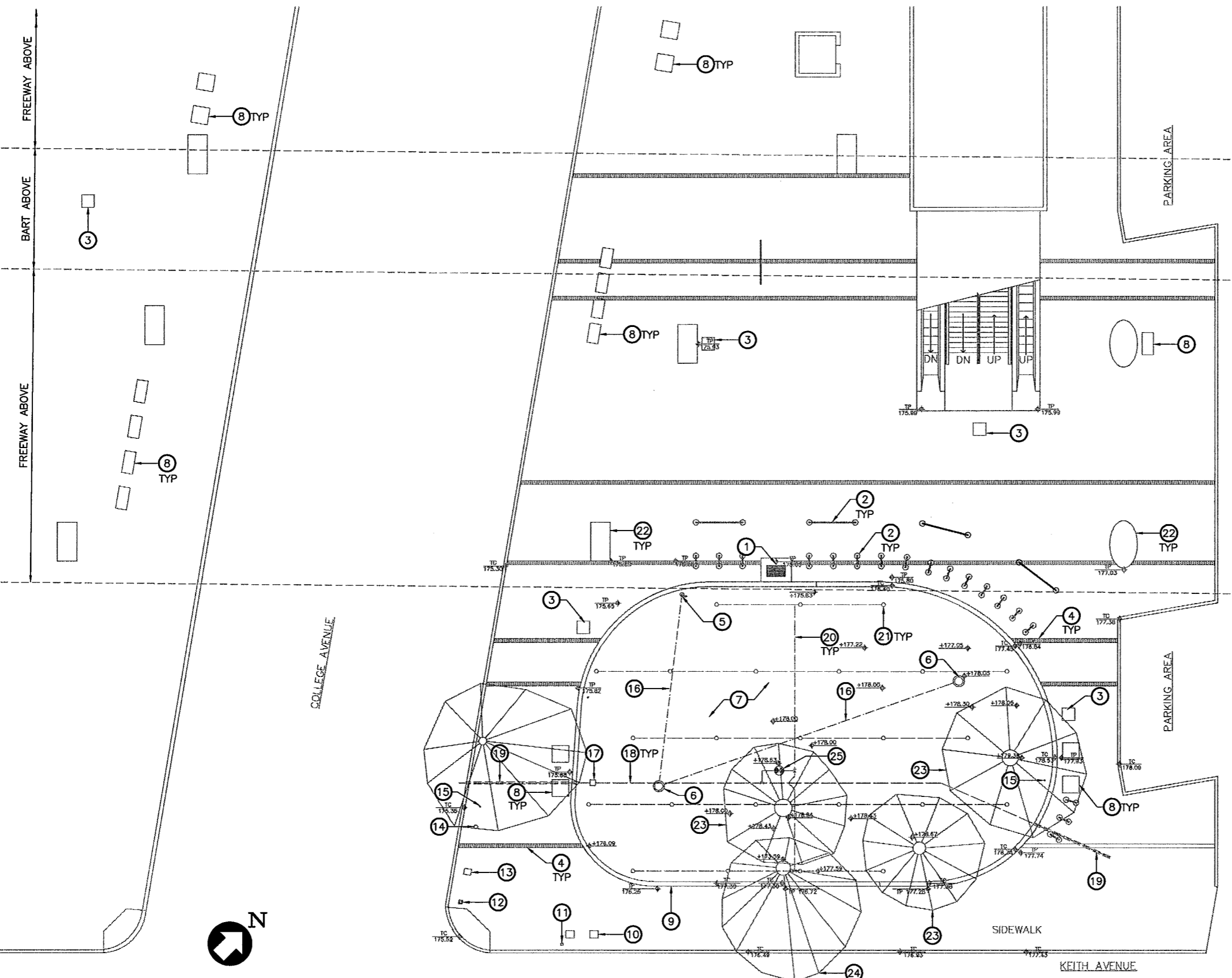


**SHEET NOTES:**

1. FOR ABBREVIATIONS, AND SYMBOLS NOTES SEE SHEETS G003 AND G004.
2. FOR GENERAL NOTES SEE SHEET C100.
3. CONTRACTOR SHALL VERIFY ALL EXISTING DIMENSIONS AND CONDITIONS ON JOB SITE, AND NOTIFY ANY DISCREPANCIES AND/OR OMISSIONS IN WRITING TO ENGINEER PRIOR PROCEEDING.

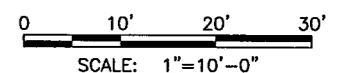
**KEY NOTES:**

- 1 CATCH BASIN
- 2 U AND WAVE BIKE RACKS
- 3 TRASH RECEPTACLE
- 4 BRICK DIVIDER STRIP
- 5 ELECTRICAL J BOX
- 6 LANDSCAPE LIGHTING
- 7 HEDERA CANARIENSIS GROUND COVER
- 8 CONCRETE BENCH
- 9 CONCRETE CURB
- 10 PAY PHONE
- 11 POST
- 12 STREET LIGHT POLE
- 13 UTILITY METER
- 14 TRAFFIC SIGNAL
- 15 SIGN
- 16 CONDUIT
- 17 3/4" MANUAL QUICK COUPLING VALE W/ LOCK COVER
- 18 MAIN WATER LINE
- 19 CMP
- 20 IRRIGATION LINE
- 21 SPRINKLER HEAD
- 22 CONCRETE COLUMN
- 23 REDWOOD TREE
- 24 ACACIA MELANOXYLON TREE
- 25 2" IRRIGATION CONTROL VALVE.



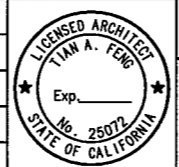
**EXISTING CONDITION SITE PLAN**  
SCALE: 1"=10'-0"

**CHECK PRINT**  
dd-user03  
May 03, 2011 - 10:34am



REV.	DATE	BY	SUB	APP.	DESCRIPTION
00					DRAWN PER BECO EMO01742

DESIGNED:  
DRAWN:  
CHECKED:  
APPROVED:  
DATE:



**SAN FRANCISCO BAY AREA RAPID TRANSIT DISTRICT**

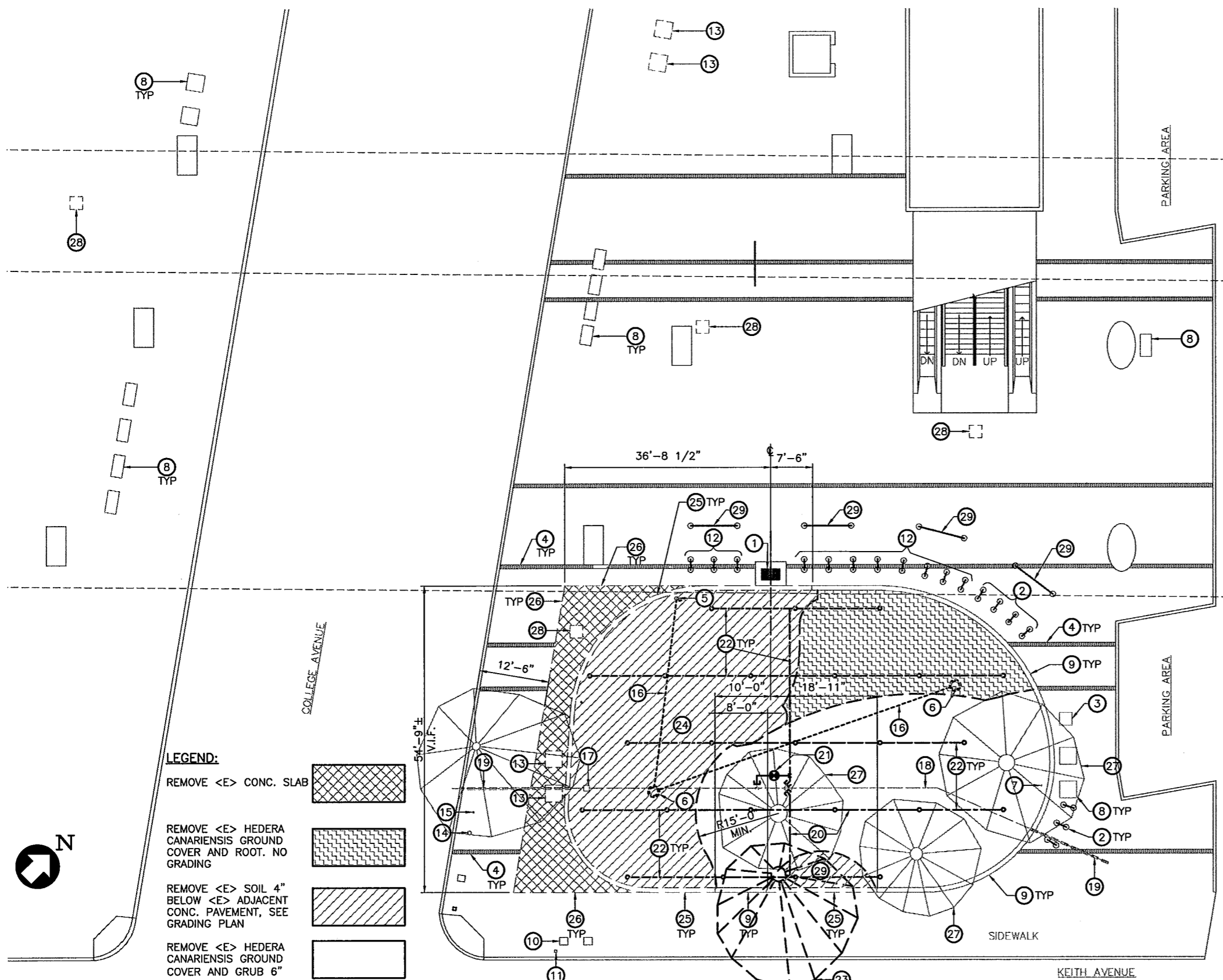
BART BART

MANAGER: \_\_\_\_\_ APPROVED BY: \_\_\_\_\_

**PARKING LOT AND WALKWAY UPGRADES AT THREE LOCATIONS**

ROCKRIDGE STATION  
EXISTING SITE CONDITION PLAN

CADD FILENAME	
SIZE: SCALE	REV.
D 1"=10'-0"	00
CONTRACT NO.	PAGE NO.
15QH-110	040
CONTRACT SHEET NO.	
C131	



**SHEET NOTES:**

1. FOR ABBREVIATIONS, AND SYMBOLS NOTES SEE SHEETS G003 AND G004.
2. FOR GENERAL NOTES SEE SHEET C100.
3. ALL GRADING AND CONSTRUCTION SHALL BE 15'-0" RADIUS AWAY FROM THE COAST REDWOOD TREE TO MINIMIZE THE LEVEL OF ROOT LOSS EXCEPT SOUTH SIDE. IF THE MAJOR ROOTS ARE AFFECTED, DO NOT PROCEED WITH SUCH WORK, NOTIFY THE ENGINEER IMMEDIATELY.
4. REMOVE ALL <E> HEDERA CANARIENSIS GROUND COVER AND ROOT.
5. PHASING AND STAGING, SEE SHEET G013.
6. FOR IRRIGATION, SEE SHEET M106.
7. FOR ELECTRICAL, SEE SHEET E108.

**KEY NOTES**

- ① <E> CATCH BASIN TO REMAIN. PROTECT THE CATCH BASIN FROM DEBRIS.
- ② <E> BIKE RACK TO REMAIN.
- ③ <E> TRASH RECEPTACLE TO REMAIN
- ④ <E> BRICK DIVIDER STRIP TO REMAIN.
- ⑤ <E> ELECTRICAL J BOX, SEE ELECTRICAL DWG., SHEET E108.
- ⑥ REMOVE <E> LANDSCAPE LIGHTING AND FOOTING, SEE ELECTRICAL DWG., SHEET E108.
- ⑦ <E> ACCESSIBILITY PARKING SIGN TO REMAIN.
- ⑧ <E> CONCRETE BENCH TO REMAIN.
- ⑨ <E> CONCRETE CURB TO REMAIN.
- ⑩ <E> PAY PHONE TO REMAIN.
- ⑪ <E> POST TO REMAIN.
- ⑫ REMOVE AND RELOCATE <E> U BIKE RACKS (TOTAL OF 4), FOR NEW LOCATION, SEE SHEET C134.
- ⑬ REMOVE <E> CONCRETE BENCH. NEW LOCATION AS DIRECTED BY THE ENGINEER.
- ⑭ <E> TRAFFIC SIGNAL TO REMAIN.
- ⑮ <E> SIGN TO REMAIN.
- ⑯ REMOVE AND CAP <E> CONDUIT.
- ⑰ REMOVE <E> 3/4" MANUAL QUICK COUPLING VALVE W/ LOCK COVER.
- ⑱ <E> MAIN WATER LINE TO REMAIN.
- ⑲ <E> CMP TO REMAIN.
- ⑳ ABANDON <E> IRRIGATION LINE, REMOVE <E> SPRINKLER HEAD AND RISER.
- ㉑ REMOVE <E> IRRIGATION CONTROL VALVE AND BOX.
- ㉒ REMOVE <E> IRRIGATION LINE, SPRINKLER HEAD AND RISER.
- ㉓ REMOVE <E> BLACKWOOD ACACIA (ACACIA MELANOXYLON) STUMP GRIND.
- ㉔ REMOVE <E> SOIL 4" BELOW THE ADJACENT CONCRETE PAVEMENT, SEE GRADING PLAN.
- ㉕ REMOVE <E> CONCRETE CURB.
- ㉖ SAWCUT AND REMOVE <E> CONCRETE SLAB.
- ㉗ <E> COAST REDWOOD (SEQUIA SEMPERVIRENS) TREE TO REMAIN.
- ㉘ REMOVE <E> TRASH RECEPTACLE. NEW LOCATION AS DIRECTED BY THE ENGINEER.
- ㉙ REMOVE AND RELOCATE <E> WAVE BIKE RACKS (TOTAL OF 10). FOR NEW LOCATION, SEE SHEET C134.

**LEGEND:**

- REMOVE <E> CONC. SLAB
- REMOVE <E> HEDERA CANARIENSIS GROUND COVER AND ROOT. NO GRADING
- REMOVE <E> SOIL 4" BELOW <E> ADJACENT CONC. PAVEMENT, SEE GRADING PLAN
- REMOVE <E> HEDERA CANARIENSIS GROUND COVER AND GRUB 6"

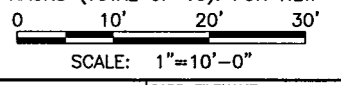
**DEMOLITION PLAN**

SCALE: 1"=10'-0"

**CHECK PRINT**

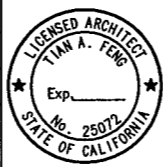
dd-user03

May 03, 2011 - 10:35am



REV.	DATE	BY	SUB	APP.	DESCRIPTION

DESIGNED:  
DRAWN:  
CHECKED:  
APPROVED:  
DATE:



**SAN FRANCISCO BAY AREA RAPID TRANSIT DISTRICT**

MANAGER: \_\_\_\_\_ APPROVED BY: \_\_\_\_\_

**PARKING LOT AND WALKWAY UPGRADES AT THREE LOCATIONS**

ROCKRIDGE STATION  
DEMOLITION PLAN

CADD FILENAME	
SIZE: SCALE	AS NOTED
CONTRACT NO.	REV. 00
15QH-110	
CONTRACT SHEET NO.	PAGE NO.
C132	041

**SHEET NOTES**

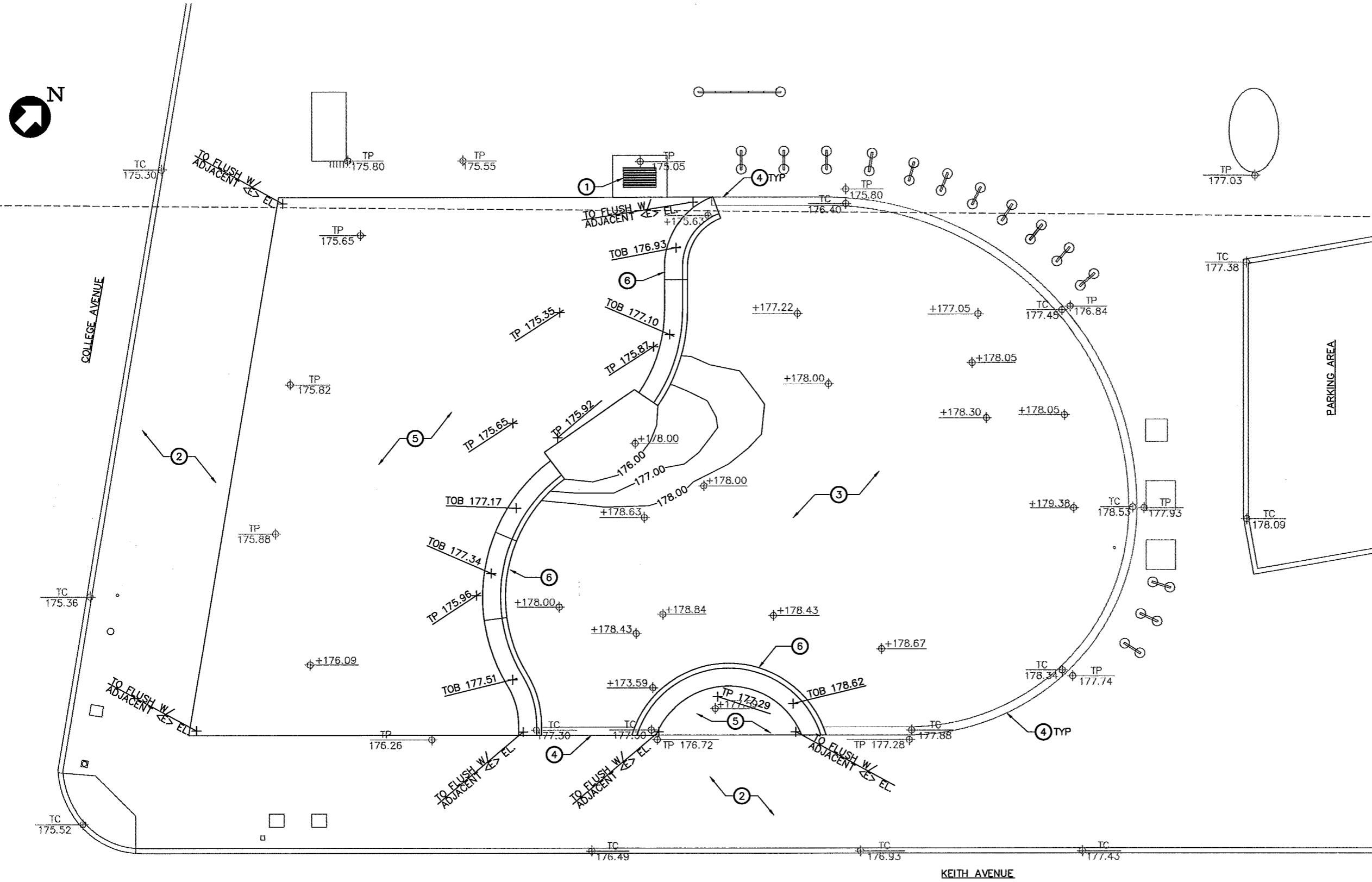
1. FOR ABBREVIATIONS, AND SYMBOLS NOTES SEE SHEETS G003 AND G004.
2. FOR GENERAL NOTES SEE SHEET C100.
3. FIELD VERIFY ALL DIMENSIONS AND ELEVATIONS.

**KEY NOTES**

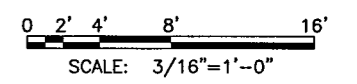
- ① <E> CATCH BASIN
- ② <E> SIDE WALK
- ③ <E> GRADE
- ④ <E> CONCRETE CURB
- ⑤ <N> CONCRETE PAVEMENT
- ⑥ <N> CONCRETE BENCH

**LEGEND**

- ⊕ TP 175.00 <E> TOP OF PAVEMENT ELEVATION
- ⊕ TC 176.50 <E> TOP OF CURB ELEVATION
- ⊕ + 177.00 <E> GRADE ELEVATION
- TP 175.87 <N> TOP OF PAVEMENT ELEVATION
- TOB 177.54 <N> TOP OF BENCH ELEVATION



**CHECK PRINT**  
 dd-user03  
 May 03, 2011 - 10:36am



REV.	DATE	BY	SUB	APP.	DESCRIPTION
00					DRAWN PER BECO EM001742

DESIGNED:  
 DRAWN:  
 CHECKED:  
 APPROVED:  
 DATE:



**SAN FRANCISCO BAY AREA RAPID TRANSIT DISTRICT**

MANAGER: APPROVED BY:

**PARKING LOT AND WALKWAY UPGRADES  
 AT THREE LOCATIONS**

ROCKRIDGE STATION  
 GRADING PLAN

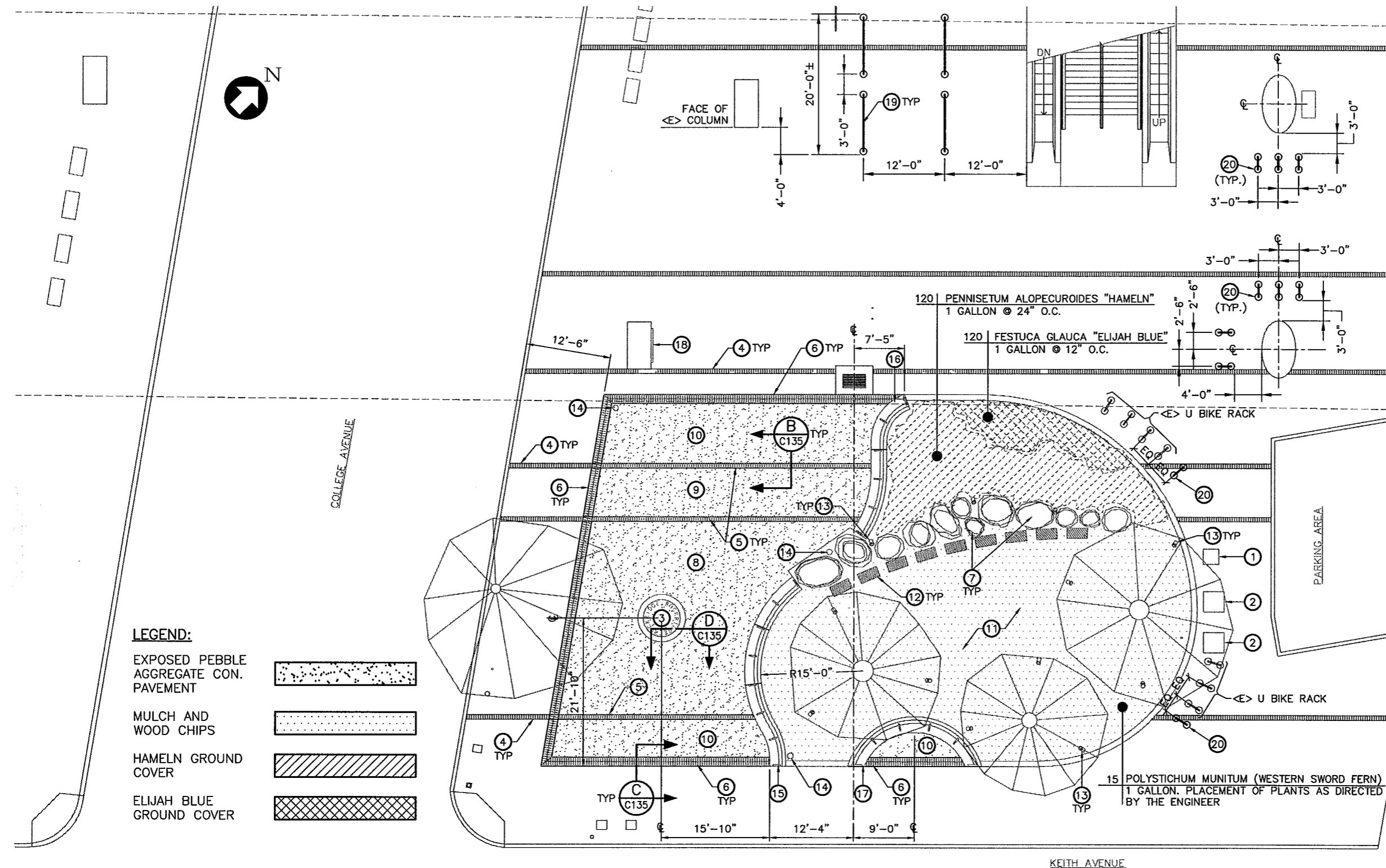
CADD FILENAME	
SIZE: SCALE	REV.
D AS NOTED	00
CONTRACT NO. 15QH-110	PAGE NO. 042
CONTRACT SHEET NO. C133	

**SHEET NOTES:**

1. FOR ABBREVIATIONS, AND SYMBOLS NOTES SEE SHEETS G003 AND G004.
2. FOR GENERAL NOTES SEE SHEET C100.
3. FOR IRRIGATION SEE IRRIGATION DWG., SHEET M106.
4. FOR ELECTRICAL SEE ELECTRICAL DWG., SHEET E108.
5. FIELD VERIFY TOP OF BENCH (TOB) ELEVATION.

**KEY NOTES:**

- 1 <E> TRASH RECEPTACLE.
- 2 <E> CONCRETE BENCH.
- 3 INSTALL TEMPORARY ROUND COVER FOR FUTURE 48# LOGO (NIC), SEE SHEET C135.
- 4 <E> BRICK DIVIDER STRIP.
- 5 INSTALL SINGLE ROW BRICK DIVIDER STRIP TO MATCH <E> BRICK.
- 6 INSTALL DOUBLE ROW BRICK DIVIDER STRIP TO MATCH <E> BRICK.
- 7 CONTRACTOR SHALL PROVIDE NECESSARY EQUIPMENT AND INSTALL DISTRICT FURNISHED "SIERRA GRANITE" OR "NAPA BASALT" BOULDER. SIZE TO BE 4 TO 8 TONS. BOULDER LAYOUT TO BE DIRECTED BY THE ENGINEER. CONTRACTOR SHALL NOTIFY THE ENGINEER TWO WEEKS PRIOR INSTALLATION.
- 8 INSTALL CONCRETE PAVEMENT W/ EXPOSED 1/4" PAMI PEBBLE AGGREGATE. BASE COLOR TO BE FLAGSTONE BROWN #641 OR EQUAL. CONTRACTOR SHALL BLOCK OUT A 42"Ø HOLE FOR FUTURE LOGO, SEE KEY NOTE 3.
- 9 INSTALL CONCRETE PAVEMENT W/ EXPOSED 1/4" PAMI PEBBLE AGGREGATE. BASE COLOR TO BE DUNE #6058 OR EQUAL.
- 10 INSTALL CONCRETE PAVEMENT W/ EXPOSED 1/4" PAMI PEBBLE AGGREGATE. BASE COLOR TO BE SUNSET ROSE #160 OR EQUAL.
- 11 INSTALL MULCHING WITH 2" OF GOOD QUALITY COMPOST AND AN ADDITIONAL 4" TO 6" OF WOOD CHIPS ON TOP.
- 12 CONTRACTOR SHALL INSTALL SIGNAGE PROVIDED BY THE DISTRICT. FOR FOOTING, SEE DETAIL 3, SHEET C135.
- 13 LIGHT FIXTURE, SEE ELECTRICAL DWG., SHEET E108.
- 14 PLAZA LIGHT FIXTURE, SEE ELECTRICAL DWG., SHEET E108.
- 15 INSTALL COLORED CONCRETE BENCH "A", SEE DETAIL 1, SHEET C135. COLOR TO BE #641 FLAGSTONE BROWN.
- 16 INSTALL COLORED CONCRETE BENCH "B", SEE DETAIL 1, SHEET C135. COLOR TO BE #641 FLAGSTONE BROWN.
- 17 INSTALL COLORED CONCRETE BENCH "C", SEE DETAIL 1, SHEET C135. COLOR TO BE #641 FLAGSTONE BROWN.
- 18 DIRECTORY CABINET (NIC).
- 19 NEW <E> WAVE BIKE RACK LOCATION (TOTAL OF 4).
- 20 NEW <E> U BIKE RACK LOCATION (TOTAL OF 10).



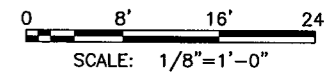
**LEGEND:**

- EXPOSED PEBBLE AGGREGATE CON. PAVEMENT
- MULCH AND WOOD CHIPS
- HAMELN GROUND COVER
- ELIJAH BLUE GROUND COVER

**PLANTING PLAN**  
SCALE: 1/8"=1'-0"

**CHECK PRINT**

dd-user03  
May 03, 2011 - 10:36am



REV.	DATE	BY	SUB	APP.	DESCRIPTION
00					DRAWN PER BECO EM001742

DESIGNED:  
DRAWN:  
CHECKED:  
APPROVED:  
DATE:



**SAN FRANCISCO BAY AREA RAPID TRANSIT DISTRICT**

MANAGER: \_\_\_\_\_ APPROVED BY: \_\_\_\_\_

**PARKING LOT AND WALKWAY UPGRADES AT THREE LOCATIONS**

ROCKRIDGE STATION  
PLANTING PLAN

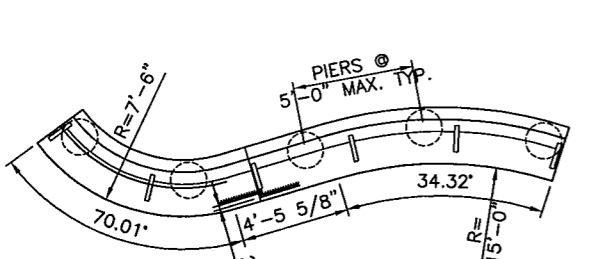
CADD FILENAME	SIZE: SCALE
	D AS NOTED
CONTRACT NO.	REV.
15QH-110	00
CONTRACT SHEET NO.	PAGE NO.
C134	043

**SHEET NOTES:**

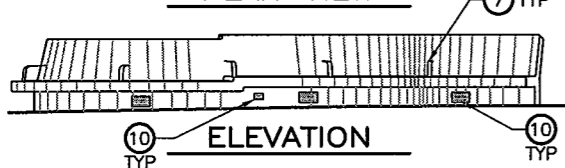
1. FOR ABBREVIATIONS, AND SYMBOLS NOTES SEE SHEETS G003 AND G004.
2. FOR GENERAL NOTES SEE SHEET C100.
3. FOR ELECTRICAL, SEE ELECTRICAL DWG., SHEET E108.

**KEY NOTES**

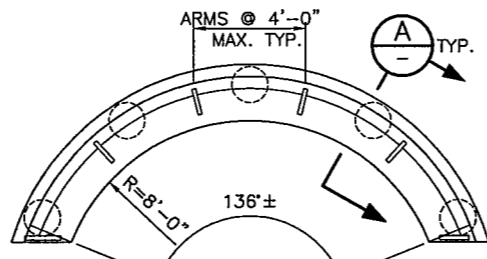
- 1 BENCH DIMENSION, REINFORCING AND PIER SEE SHEET C136.
- 2 6-#5 REBARS.
- 3 #4 @ 12" TIES. TYP. UNO.
- 4 4-3/4" X 24" LONG ANCHOR BOLTS. CONTRACTOR SHALL VERIFY THE DIMENSION.
- 5 SIGNAGE PROVIDED BY THE DISTRICT.
- 6 1/2" ST STL BOLTS EMBEDDED 3" MIN.
- 7 1/4" X 2" ST STL BENT PLATE ARM
- 8 SURFACE TO BE SMOOTH FINISH AND CONCRETE COLOR TO BE #641 FLAGSTONE BROWN.
- 9 3/4" ROUND EDGE
- 10 J BOX FOR LIGHT FIXTURE AND/OR RECEPTACLE, SEE ELECTRICAL DWG., SHEET E108.
- 11 CONDUIT, SEE ELECTRICAL DWG., SHEET E108.
- 12 #4 12" O.C. EW.
- 13 CONCRETE PAVEMENT W/ EXPOSED AGGREGATE, SEE SHEET C134
- 14 1 3/8" X 8" X 4" BRICK PAVER IN SETTING BED.
- 15 CRUSHED ROCK BASE
- 16 1/2" REMOLDED EXPANSION JOINT
- 17 <E> CONCRETE SLAB.
- 18 SETTING BED.
- 19 4X4 PRESSURE TREATED @ 24" O.C.
- 20 2X PRESSURE TREATED JOISTS @ 12" O.C. TOE NAILED TO 4X4 BELOW.
- 21 3/4" X 42" EXTERIOR PLYWOOD FOR TEMPORARY COVER FASTENED TO JOISTS BELOW.
- 22 2X4 PRESSURE TREATED SLEEPER @ 12" O.C. W/ 2 COUNTERSINK WEDGE BOLTS PER SLEEPER.



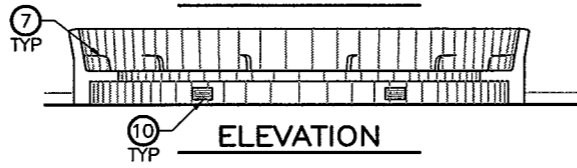
PLAN VIEW



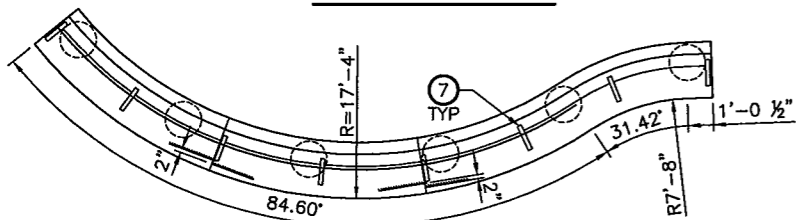
ELEVATION  
BENCH "B"



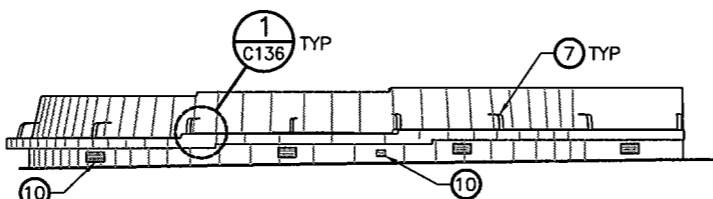
PLAN VIEW



ELEVATION  
BENCH "C"



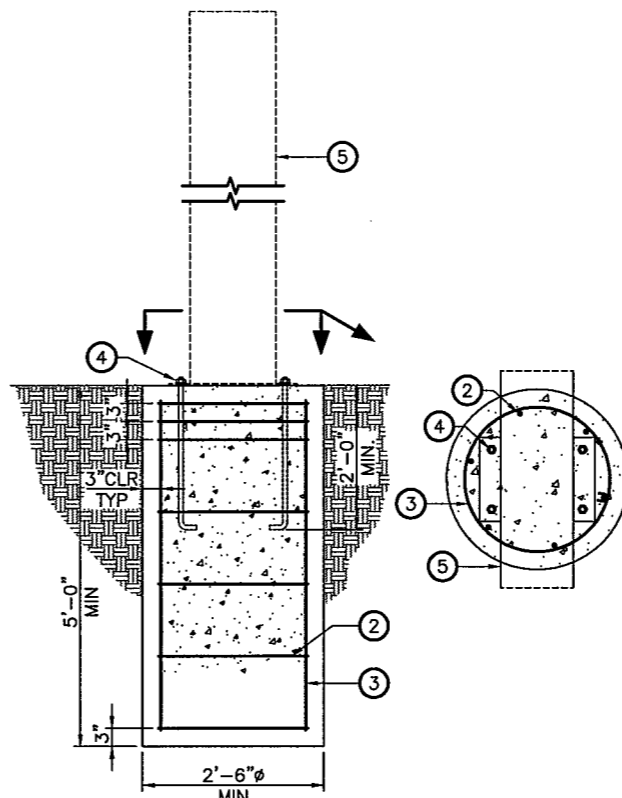
PLAN VIEW



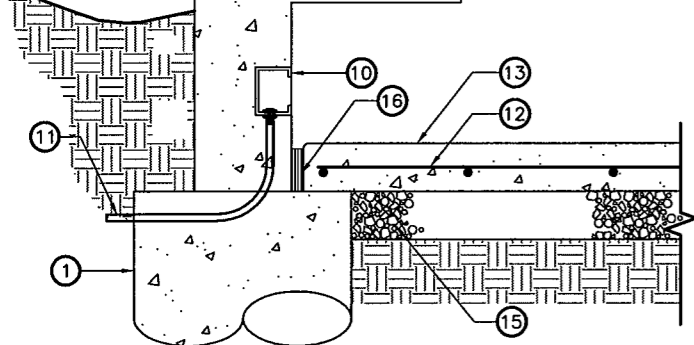
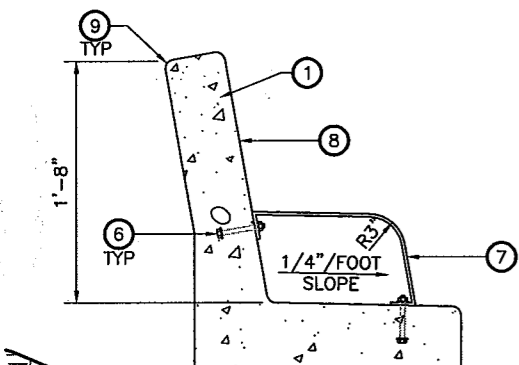
ELEVATION

BENCH "A"

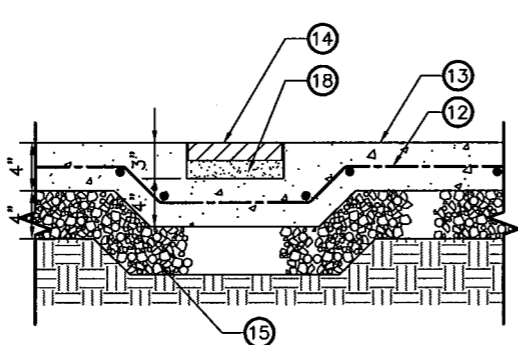
DETAIL 1  
SCALE: 1/4" = 1'-0"



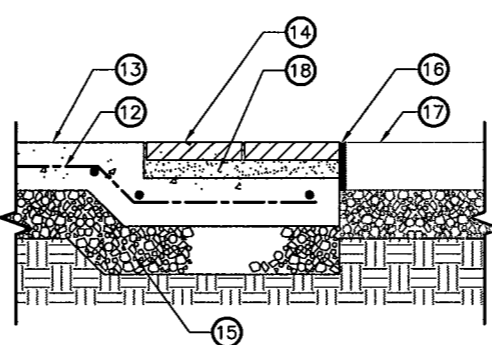
SIGNAGE DETAIL 3  
SCALE: 3/4" = 1'-0"



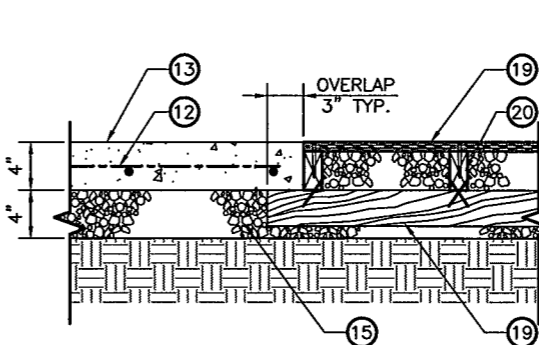
SECTION A  
SCALE: 1 1/2" = 1'-0"



SECTION B  
SCALE: 1 1/2" = 1'-0"

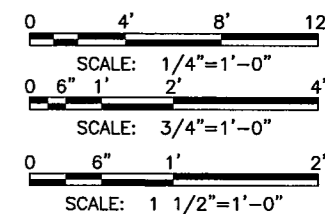


SECTION C  
SCALE: 1 1/2" = 1'-0"



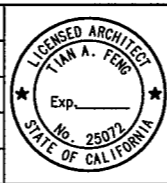
SECTION D  
SCALE: 1 1/2" = 1'-0"

**CHECK PRINT**  
dd-user03  
May 03, 2011 - 10:45am



REV.	DATE	BY	SUB	APP.	DESCRIPTION

DESIGNED:  
DRAWN:  
CHECKED:  
APPROVED:  
DATE:



**SAN FRANCISCO BAY AREA RAPID TRANSIT DISTRICT**

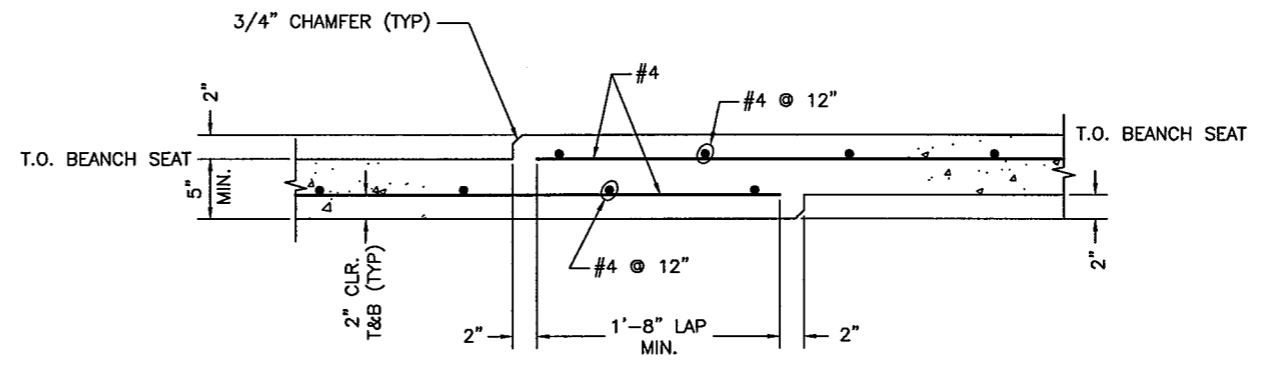
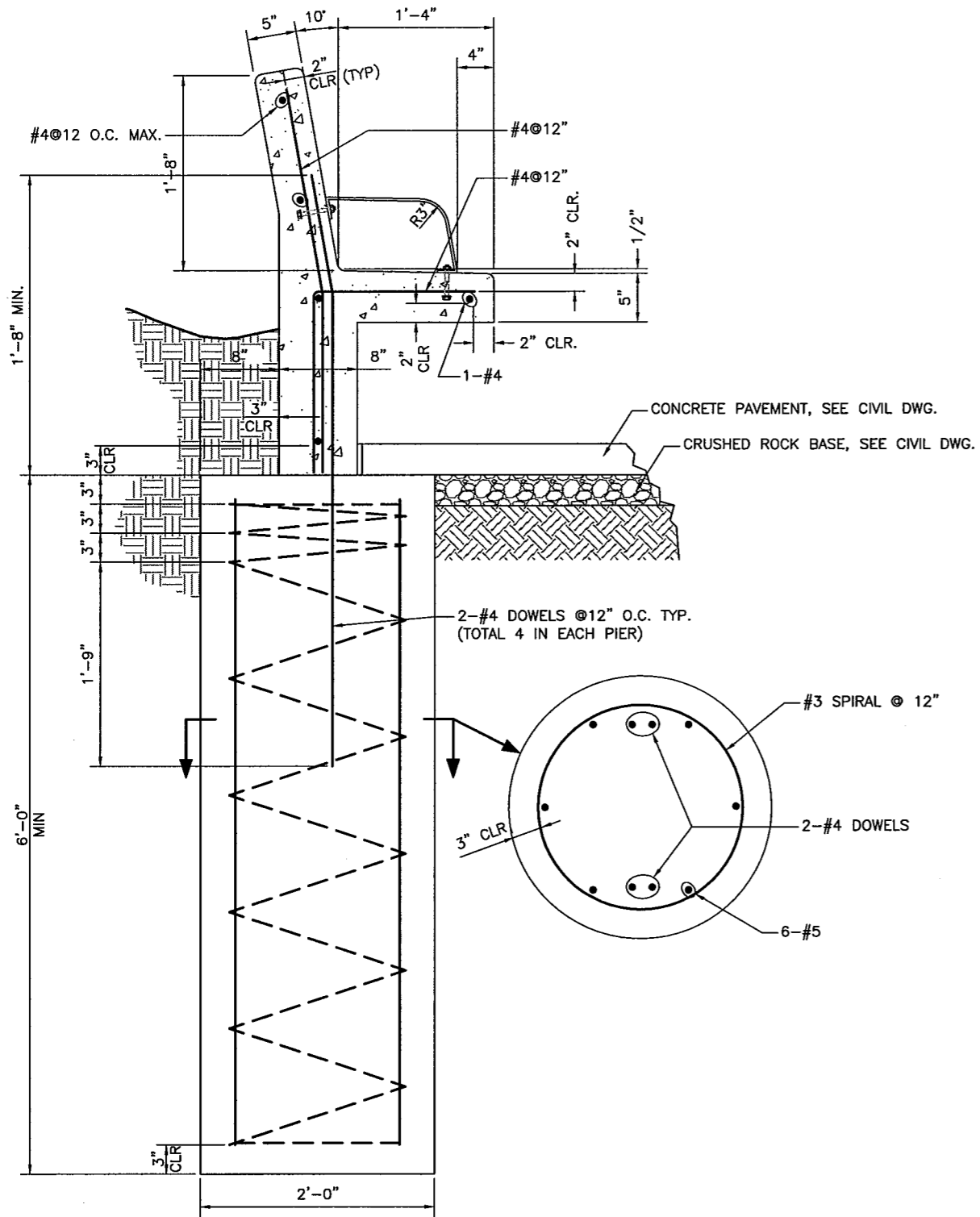
**BART**  
MANAGER: \_\_\_\_\_

**BART**  
APPROVED BY: \_\_\_\_\_

**PARKING LOT AND WALKWAY UPGRADES AT THREE LOCATIONS**

ROCKRIDGE STATION  
SECTIONS AND DETAILS

CADD FILENAME	
SIZE: SCALE	AS NOTED
CONTRACT NO.	REV.
15QH-110	00
CONTRACT SHEET NO.	PAGE NO.
C135	044



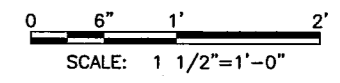
- STRUCTURAL GENERAL NOTES**
1. FOR ABBREVIATIONS, AND SYMBOLS NOTES SEE SHEETS G003 AND G004.
  2. ALL WORK SHALL BE DONE IN ACCORDANCE WITH THE 2007 CBC (CALIFORNIA BUILDING CODE).
  3. CONCRETE:
    - A. AT 28 DAYS CONCRETE SHALL HAVE A COMPRESSIVE STRENGTH OF 4000 PSI.
    - B. CEMENT SHALL CONFORM TO ASTM C150 TYPE II.
    - C. AGGREGATE SHALL BE 3/4" MAX.
    - D. REINFORCING STEEL SHALL BE DEFORMED BARS CONFORMING TO ASTM A615, GRADE 60.
    - E. CONCRETE SLUMP SHALL BE 3" TO 4".
    - F. FOR FINISH AND COLOR OF CONCRETE, SEE SHEET C135.
    - G. LAP LENGTH FOR #4 BAR;
      - TOP BAR: 2'-0"
      - OTHER BAR: 1'-8"
    - H. SUBMIT CONCRETE MIX DESIGN BY A QUALIFIED TESTING LAB CERTIFIED BY LICENSED CIVIL ENGINEER REGISTERED IN THE STATE OF CALIFORNIA.
    - J. REFER TO PART 3 OF PORTLAND CEMENT CONCRETE SPEC FOR CONCRETE TESTING REQUIREMENTS.

**SECTION A**  
SCALE: 1 1/2" = 1'-0" C136 C135

**DETAIL 1**  
SCALE: 1 1/2" = 1'-0" C136 C135

- NOTES:**
1. FOR PIER LOCATION SEE DWG. C135.
  2. FOR INFO. NOT SHOWN SEE DWG. C135.

**CHECK PRINT**  
dd-user03  
May 03, 2011 - 10:46am



DESIGNED:										SAN FRANCISCO BAY AREA RAPID TRANSIT DISTRICT										PARKING LOT AND WALKWAY UPGRADES AT THREE LOCATIONS										CADD FILENAME									
DRAWN:										MANAGER:										APPROVED BY:										SIZE: SCALE									
CHECKED:										bART										bART										D AS NOTED									
APPROVED:										No. S4668										CONTRACT NO.										REV.									
DATE:										Exp. 6/30/										15QH-110										00									
DRAWN PER BECO EM001742										STRUCTURAL										ROCKRIDGE STATION										CONTRACT SHEET NO.									
										STATE OF CALIFORNIA										STRUCTURAL DETAILS										C136									
																														PAGE NO.									
																														045									